

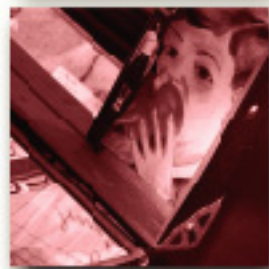
THE JAPANESE AMERICAN MUSEUM OF SAN JOSE (JAMSJ) PRESENTS

1942



LUGGAGE FROM HOME TO CAMP

July 1, 2003 - June 30, 2004



by **Flo Oy Wong**

with barrack design by
Jimi Yamaichi

Reception:

August 7, 2003, 5:00 - 7:00 pm

Japanese American Museum of San Jose
535 North Fifth Street
San Jose, CA 95112

Museum Hours:

11:00 am to 3:00 pm, Tuesday - Friday

11:00 am to 2:00 pm, Sunday

Closed on Saturday & Monday

Or by appointment

Symposium: October 11, 2003

For more information please telephone 408.294.3133 or visit www.jamsj.org